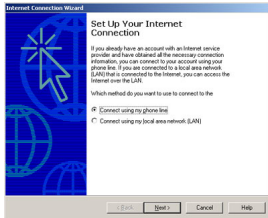


1. Click on the **Start** button.
2. Click on **Run**.
3. Where is has **Open** type in **inetwiz** and press the OK button.
4. Select the option **Connect using my Phone Line**.



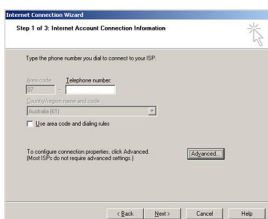
5. Click on **Next** to proceed
6. Select **Create a new dial-up connection**.



7. Click on **Next** to proceed
8. Uncheck the box that says **"Use Area Code And Dialing Properties"** or **"Use Area Code And Dialing Rules"**

Also enter in the iSage Dialup Number **0198308020**

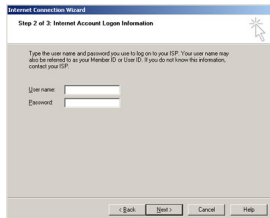
NOTE: The phone number will dial exactly as it appears in the Phone Number Field as we have disabled the Dialing Rules. This can be changed through the properties of the connection later.



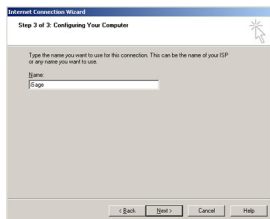
9. Click on **Next** to proceed
10. Enter the correct username and password as provided by iSage into the fields and click on **Next** to proceed

Username: username@isage.net.au

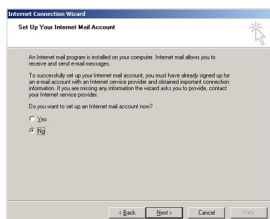
Password: your password



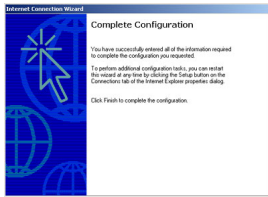
11. You will now be asked to name the connection just type in the field **iSage**.



12. Click on **Next** to proceed
13. The wizard will now ask if you want to setup your email account, select **No** as this can be done at a later time in your chosen **Email Client**



14. Click on **Next** to proceed
15. Click on **Finish** to complete the dialup setup



By default, Internet Explorer is the default browser. You may be prompted to visit a website and download software. You may be prompted to download and install Internet Explorer setup software and to download and install Microsoft Windows Firewall.