

6. Enter the correct phone number, username and password as provided by iSage. It is recommended to check the boxes for **Remember Password** and **Allow other people to use this connection**

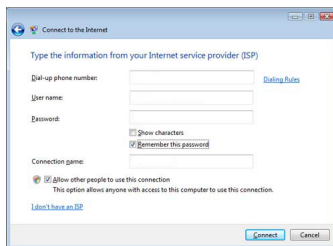
The connection can be named something like "iSage Dial-up". Click on **Create**

Username: username@isage.net.au

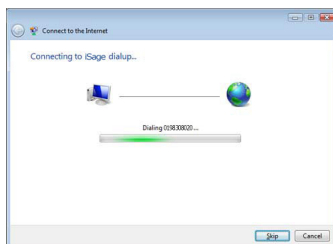
Password: your password

Dialup Number: 0198308020

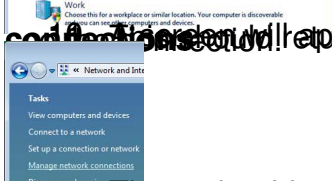
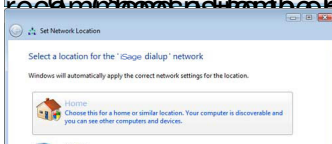
NOTE: The phone number will dial exactly as it appears in the Phone Number Field. The Dialing Rules are disabled by default. This can be changed through the properties of the connection later.



7. The Dial-up connection has now been created. Let the connection connect if possible and proceed to Step 8. Only click Skip If you are using the phone or the phone cable is not connected to the computer or dial-up modem yet. Proceed to step 10 if you must click Skip.



8. If the correct information was entered in step 6, the Internet connection should be established. Press Close.



Work depending on how the dial-up connection is to be used. We

code. In the second step, you will appear in the **Network And Sharing Center** ready for **Manage network**

and the connection that has been created. Click on **Connect to a network**. Right click on the **Set up a connection or network** task in the task pane, and click on **Set up a connection or network**.